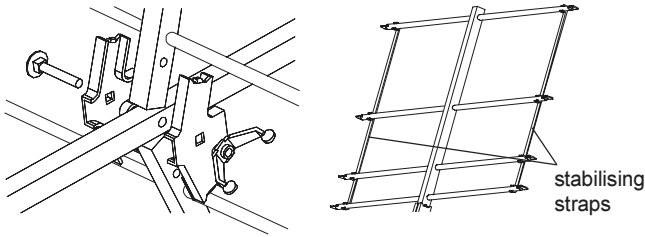


## DMX05WB/F & DMX10WB/F

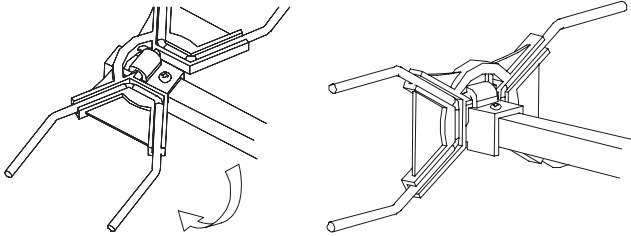
### Fit reflector sections to aerial boom

Loosen wing nut but do not remove. Insert both reflector sections as shown. Ensure locating lugs on clamps fit into mating holes in reflector booms. Securely tighten wing nut. Fit plastic stabilising straps to reflectors.



### Position elements

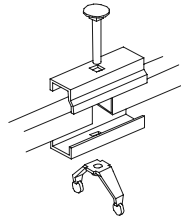
Rotate and snap the X-shaped director elements into a vertical position.



## DMX10WB/F

### Main mast/boom clamp

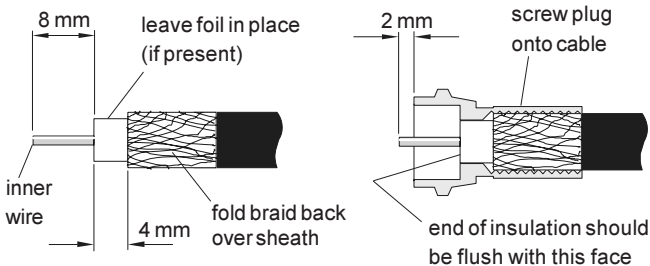
Join two main boom sections with plastic plugs at front and rear ends of aerial. Loosen but do not remove wing nut on boom coupler. Join the two uncapped boom ends as shown ensuring that ends are as close together as possible (allowing room for coupler bolt). Tighten wing nut securely.



## DMX05WB/F & DMX10WB/F

### Fit coaxial cable and screw-on 'F' plug

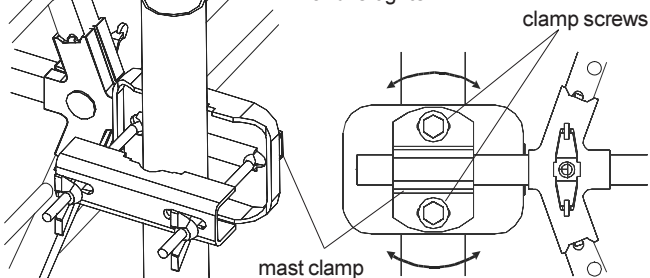
Push cable through waterproofing sleeve before fitting plug. Prepare cable end and fit screw-on 'F' plug as shown below. (Inner wire of cable should extend slightly beyond end of plug.) Offer plug up to socket in aerial housing and tighten gently (11 mm spanner). **Do not leave plug finger-tight as this may lead to unreliable reception.** Slide waterproofing sleeve into position over lip on balun housing.



## DMX05WB/F

### Fit aerial to a mast

Slide mast clamp over a suitable mast  $1\frac{1}{4}$ " –  $1\frac{1}{2}$ " (32-38 mm) diameter and tighten wing nuts. The diagrams show aerial horizontally polarised, for vertical polarisation rotate aerial through  $90^\circ$  in the mast clamp. To tilt aerial loosen clamp screws, set position and re-tighten.



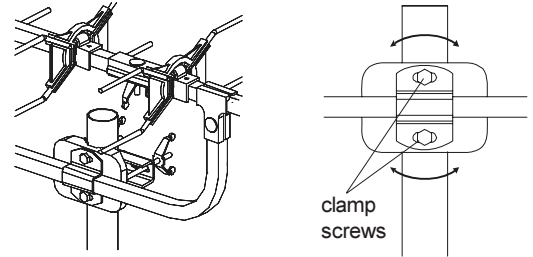
## Assembly and fitting guide Aerials with 'F' Balun

### DMX05WB/F DMX10WB/F

## DMX10WB/F

### Fit aerial to a mast

Slide mast clamp over a suitable mast  $1\frac{1}{4}$ " –  $1\frac{1}{2}$ " (32-38 mm) diameter and tighten wing nuts. To tilt aerial loosen clamp screws, set position and re-tighten.



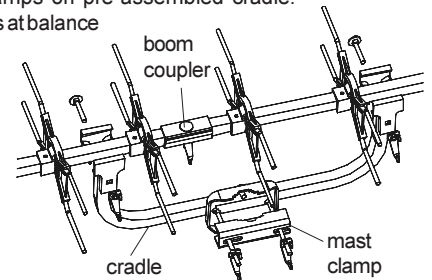
### Fit mounting cradle to aerial

Loosen and spread clamps on pre-assembled cradle.

Position cradle on booms at balance point of aerial as shown

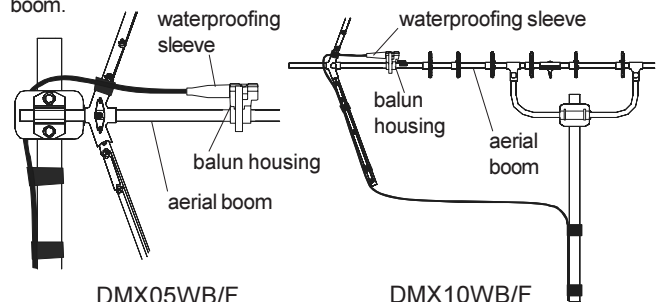
and tighten wing nuts (the diagram shows aerial horizontally polarised).

For vertical polarisation rotate cradle through  $90^\circ$  in mast clamp.



### Recommended cable routes

For best aerial performance cable should be routed as shown and secured with pvc tape (not supplied). The cable should not touch aerial boom.



### Kit Contents DMX05WB/F

- 1 - Aerial boom elements only.
- 1 - Dipole and cap.
- 4 - Plastic reflector straps.

- 1 - Mast clamp.
- 2 - Reflector sections.
- 1-F-type plug.

### Kit Contents DMX10WB/F

- 1 - Aerial boom with arrow plate attached.
- 1 - Aerial boom elements only.
- 1 - Dipole and cap.
- 4 - Plastic reflector straps.

- 1 - Cradle and mast clamp.
- 2 - Reflector sections.
- 1-F-type plug.

Further advice may be downloaded from:

[www.blake-uk.com/downloads](http://www.blake-uk.com/downloads) on the following:

- reception problems
- fitting coaxial connectors
- distributing TV signals around the home
- general recommendations

**Safety : working at height - carry out work outdoors at height only if you are competent in the use of ladders and related access equipment. Always work safely within your own limitations, ensuring that all equipment used is appropriate and is in good condition.**